

Can you match the picture with the type of marking shown?

1



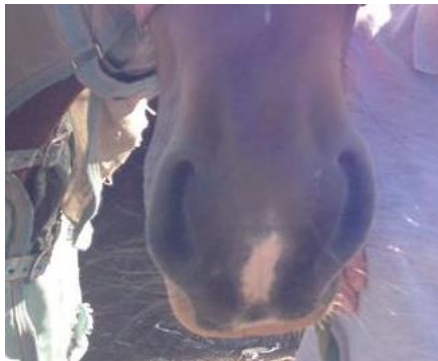
SNIP

2



BLAZE

3



STAR

4



SOCK

Can you match the picture with the horse colour?

PIEBALD

GREY

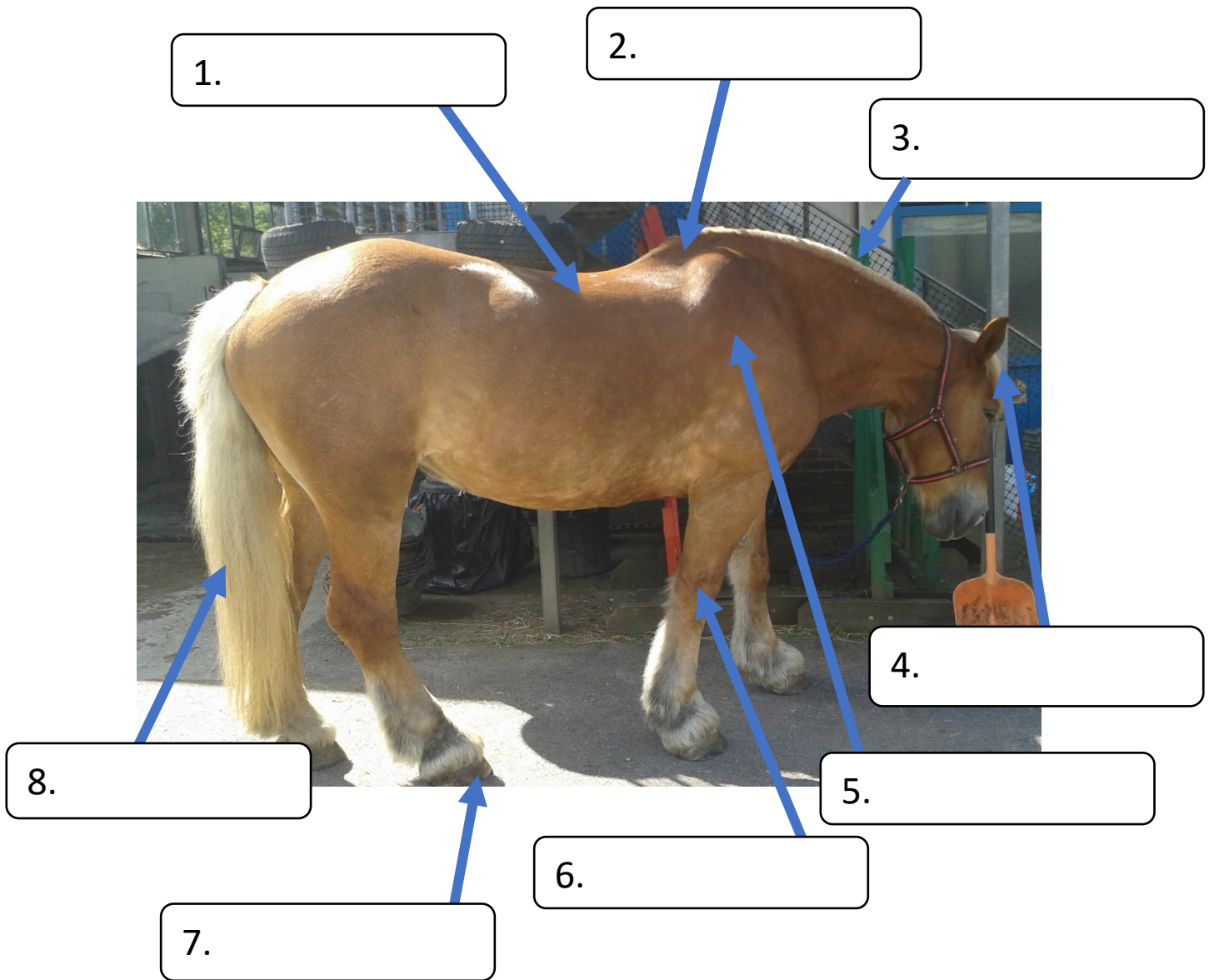
BAY

CHESTNUT

SKEWBALD



Can you label all 8 parts of the horse?



hoof

mane

back

shoulder

knee

tail

withers

forelock

Answers
 Horse Markings: Picture 1= blaze, Picture 2= star, Picture 3= snip, Picture 4= sock
 Horse colours: Picture 1= piebald, Picture 2= skewbald, Picture 3= chestnut, Picture 4= grey,
 Picture 5= bay
 Parts of the horse: 1. back 2. withers 3. mane 4. forelock 5. shoulder 6. knee 7. hoof 8. tail